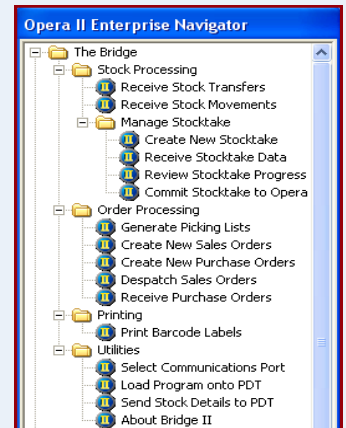




BRIDGE Mobile

FOR



Facilities of the Bridge

The Bridge is a module utilising the many benefits of modern barcode technology. It links directly to Opera Stock Control, Purchase Order Processing and Sales Order Processing. An optional module includes facilities for the collection of batch and/or serial numbered stock items in both stock and order processing.

Stock Processing

Create New Stock Take: Allows the user to create a new set of stock take files prior to beginning their stock take. Details of the stock items to be included in the stock take are recorded in an "Uncounted Stock" file.

Receive Stock Take Data: Allows the user to download stock take data collected on a hand-held data capture terminal (barcode scanner) to their PC, and moves details for the stock items downloaded, including the counted stock balance, from the "Uncounted Stock" file to a "Counted Stock" file.

Review Stock Take Progress: Allows the user to examine and, if necessary, edit downloaded stock data before further downloads and prior to committal to Opera. By examining the "Uncounted Stock" file the user can easily establish which stock items remain to be counted.

Commit Stock Take to Opera: Allows the user to update Opera with stock take data once all items which need to be counted have been counted. New stock balances are written to the Opera Stock File, and stock balances for items remaining in the "Uncounted Stock" file are zeroised.

Receive Stock Transfers: Allows the user to make easy, single-transaction movements of stock from one warehouse to another.

Receive Stock Movements: Allows the user to record issues, receipts and returns of stock, using barcodes to speed and optimise the accuracy of the process.

Specialists in Mobile Data Capture Solutions



Order Processing

Generate Picking Lists: Allows the user to print picking lists for selected sales orders. The picking list includes the order number barcode necessary for input to Despatch Sales Orders.

Create New Sales Orders: Automates collection of sales order data and its input to Opera Sales Order Processing to create sales orders.

Create New Purchase Orders: Allows the user to collect purchase orders data and download details of the orders to create purchase orders.

Despatch Sales Orders: Allows the user to download details of sales orders to be despatched and update Opera, marking the sales order records "delivered" or "part delivered".

Receive Purchase Orders: Allows the user to download details of purchase order items received and to update Opera, marking the relevant purchase order records "delivered" or "part delivered".

Utilities

Select Communications Port: Allows the user easily to set up the communications channel required to download data from the barcode reader to the PC.

Load Program onto PDT: The hand-held barcode reader contains all the terminal software needed to operate **The Bridge** system when it is delivered to the user. However, should this software ever need to be re-loaded on to the terminal this facility enables the user to do so quickly and easily.

Send Stock Details to PDT: Allows the user to download all or part of their Opera Stock File details to the barcode reader. The validity of stock references will then be automatically checked as data is collected on the barcode reader.

Printing

Print Barcode Labels: Provides the facility to print stock reference barcodes on to standard Avery labels.

