

CK Sagelink

Product Overview:

An easy to use utility to convert Sage 50 data to Opera II. CK Sagelink is compatible with all versions of Sage 50 Accounts (formerly Sage Line 50) up to version 2009 (v15).

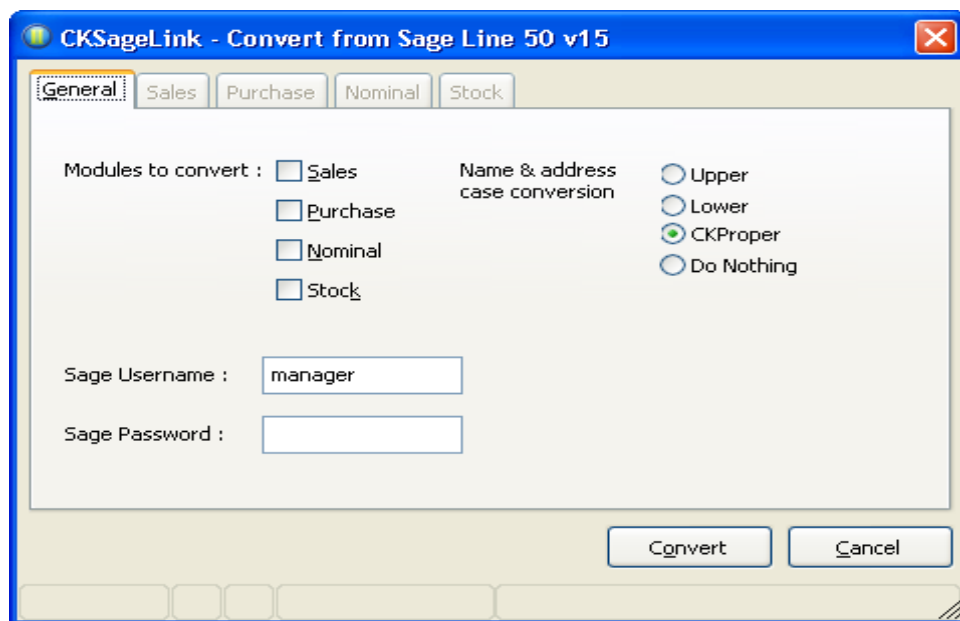
Data that can be converted:

- Nominal – chart of accounts and opening balances
- Sales – headers and transactions (outstanding or full history)
- Purchase – headers and transactions (outstanding or full history)
- Stock – headers and transactions (opening balances or full history)

Headers only or headers and transactions can be converted.

Key Functionality:

- Priced per site regardless of number of datasets to be converted.
- Option driven so you can decide exactly what data to convert to Opera II
- Easy to use menu based system makes conversion simple or if preferred you can send your data to CK Systems for us to perform the conversion
- Option for automatic name and address case conversion to tidy up address – either to all upper case, lower case or sentence case



Note: The Pegasus Opera II Toolkit must be present on the system.

Demo version available on request (limited to first 10 records of each module)

CK Systems Ltd, No.4 Castle Court 2, Castlegate Way, Dudley, West Midlands. DY1 4RH
t 01384 245200 f 01384 245250 m 07778 928332 e sales@ckca.co.uk w www.cksystems.co.uk
